

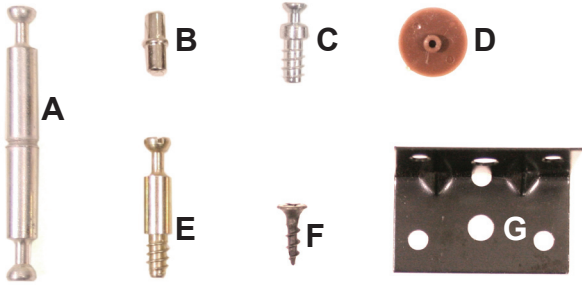
REGENCY

YOUR COMPLETE OFFICE SOLUTION

LBC7132 (L7132BC), VBC7132 (V7132BC) - INSTRUCTIONS

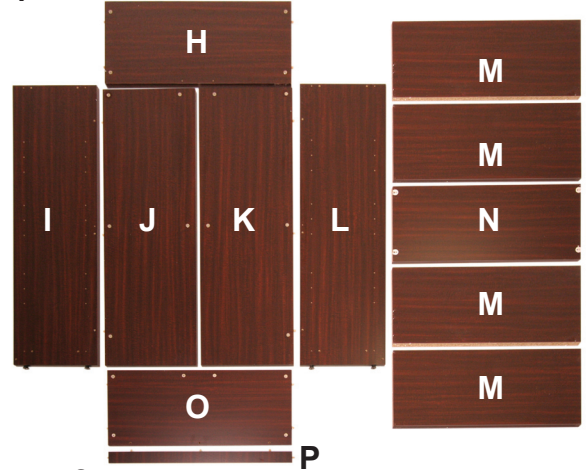
Organize your parts and hardware.

Hardware should include:



- A) 1 Double Cam Lock
- B) 16 Shelf Support Pins
- C) 4 Locking Shelf Support Pins (4 Locks should already be in Center Shelf)
- D) 14 Caps
- E) 18 Cam Locks
- F) 6 Screws G) 1 L-Bracket

NOTE: 20 Cams (shown in Step 2) should already be placed in wooden parts.



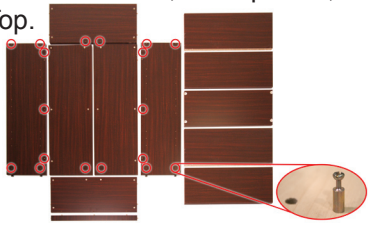
Wooden Components include:

- H) 1 Top Shelf I) 1 Left Side J) 1 Left Back K) 1 Right Back L) 1 Right Side
- M) 4 Adjustable Shelves N) 1 Locking Center Shelf O) 1 Bottom Shelf P) 1 Bottom Support

NOTE: When identifying components, remember that the bottom edge of the Side and Back Pieces is black.

Tools Required: Phillips Screwdriver

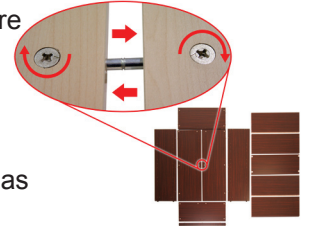
Step 1: Thread Cam Locks (E) into small holes in Sides, Back pieces, and Top.



Step 2: Check Cams to make sure that the arrow is pointing toward the hole in the side as shown.



Step 3: Attach Back Pieces (J, K) together with the Double Cam Lock (A). Secure pieces together by turning cams clockwise as shown.



Step 4: Attach Bottom Support (P) to Bottom Shelf (O); insert dowel rods on the Support into holes on the bottom of Shelf. Attach L-Bracket (G) with Screws (F) as shown.



Step 5: Attach Top and Bottom Shelves (H, O) to Back Pieces (J, K); turn cams clockwise to secure.



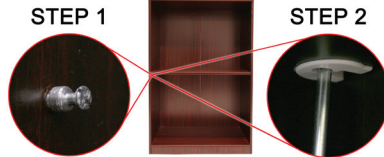
Step 6: Attach Sides (I, L) to Top, Bottom, and Back Pieces; turn cams clockwise to secure.



Step 7: Place Caps (D) over visible Cams.



Step 8: Thread Locking Support Pins (C) into place. Place Center Shelf (N) onto supports; turn lock with screwdriver to secure.



Step 9: Using Shelf Support Pins (B), position adjustable shelves (M) as desired.



IMPORTANT NOTICE:

- Place all wooden parts on a clean and smooth surface such as a rug or carpet to avoid the parts from being scratched.
- Check to be sure that you have all parts and hardware.
- Remove all wrapping materials, including staples & packing straps before you start to assemble.
- Do not tighten all screws/bolts until completely assembled.
- Keep all hardware parts out of reach of children.

Any problems or questions call Regency Office Furniture at 1-866-816-9822

